

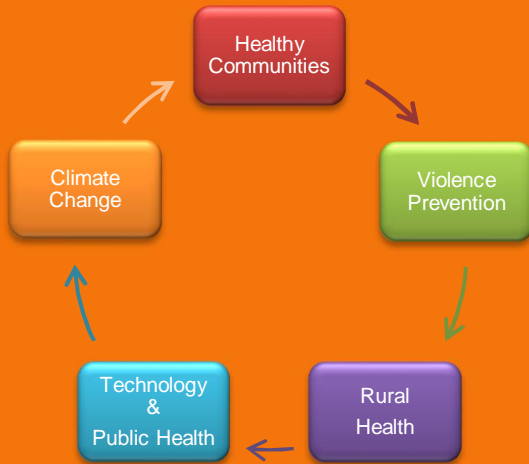


March 2019

	Sun	Mon	Tue	Wed	Thu	Fri	Sat	
Patient Safety						1	2	
	3	4	5	6	7	8	9	
Together in Safety <i>Patient Safety Awareness Week</i> <i>March 10-16, 2019</i>	10	11	12	13	14	15	16	
	Daylight Saving Time Begins	Patient Safety Awareness Week March 10-16						
OPSI Recommended Resources: <ul style="list-style-type: none"> American Association of Poison Control Centers http://www.aapcc.org Institute for Healthcare Improvement/NPSF http://www.ihl.org/Topics/PatientSafety/Pages/default.aspx http://www.ihl.org/Engage/Initiatives/Patient-Safety-Awareness-Week/Pages/default.aspx http://www.npsf.org/ 	17	18	19	20	21	22	23	
	National Poison Prevention Week March 17-24							
	24	25	26	27	28	29	30	National Doctors' Day
31								

April 2019

Public Health



OPSI Recommended Resources:

- **American Public Health Association**
<http://www.nphw.org/nphw-2019/healthy-communities-2019>
- **Institute for Healthcare Improvement/NPSF**
<http://www.ihl.org/resources/Pages/Tools/ResourcesforPublicHealth.aspx>
- **Ohio Department of Health**
<https://odh.ohio.gov/wps/portal/gov/odh/home/>
- **World Health Organization – Health Topics**
<http://www.who.int/topics/en/>

Sun	Mon	Tue	Wed	Thu	Fri	Sat
	1	2	3	4	5	6
National Public Health Week April 1-7						
	Theme: Healthy Communities April Fool's Day	Theme: Violence Prevention	Theme: Rural Health	Theme: Technology & Public Health	Theme: Climate Change	
7	8	9	10	11	12	13
National Volunteer Week April 7-13						
				*OPSI Audio Conference		
14	15	16	17	18	19	20
		Tax Day			Good Friday Passover begins	
21	22	23	24	25	26	27
Easter	Earth Day					National Prescription Drug Take Back Day
28	29	30				
				*Improving STEMI and STEMI Outcomes by Collaboration and Reducing Variability		Register for the OHA Annual Meeting This Month

Hand Hygiene



OPSI Recommended Resources:

- **Center for Disease Control**
<https://www.cdc.gov/handwashing/why-handwashing.html>
<https://www.cdc.gov/flu/index.htm>
- **World Health Organization**
<https://www.who.int/infection-prevention/campaigns/clean-hands/5may2019/en/>
<https://www.who.int/infection-prevention/campaigns/ipc-global-survey-2019/en/>
https://www.who.int/gpsc/tools/Five_moments/en/

Sun	Mon	Tue	Wed	Thu	Fri	Sat
			1	2	3	4
5	6	7	8	9	10	11
	National Hospital Week May 6-12					
	National Nurses Week May 6-12					
World Hand Hygiene Day	Ramadan Begins					
12	13	14	15	16	17	18
	National Nursing Home Week May 12-18					
Mother's Day			IHI Patient Safety Congress May 15-17			Armed Forces Day
19	20	21	22	23	24	25
	Victoria Day (Canada)					
26	27	28	29	30	31	
	Memorial Day					

Risk Management



OPSI Recommended Resources:

- American Society for Healthcare Risk Management
<http://www.ashrm.org>
<http://www.ashrm.org/resources/hrm-week/index.dhtml>
- Ohio Society for Healthcare Risk Managers
<http://ohiohospitals.org/oshrm/>

Sun	Mon	Tue	Wed	Thu	Fri	Sat
						1
2	3	4	5	6	7	8
OHA Annual Meeting June 3-5						
		Ramadan Ends	Quality Summit			
9	10	11	12	13	14	15
				*OPSI Audio Conference	Flag Day	
16	17	18	19	20	21	22
Healthcare Risk Management Week June 17-21						
Father's Day					First Day of Summer	
23	24	25	26	27	28	29
30						*How Can an Enhanced Recovery After Surgery Program Improve Care of Surgical Patients

Anticoagulation Therapy Safety

PROTOCOLS
that are evidence based

- Starting
- Continuing
- Reversing

PROCESSES

- Adverse drug events
- Bleeding

PREVENT
adverse events

- Prefilled syringes
- Premixed infusion bags
- Programmable pumps

PATIENT EDUCATION

- Dosing and schedule
- Food/drug interactions
- Lab tests and follow up

OPSI Recommended Resources:

- **Institute for Safe Medication Practices**
<https://www.ismp.org/taxonomy/term/45>
- **Pennsylvania Patient Safety Authority**
http://patientsafety.pa.gov/pst/Pages/Anticoagulation_Management/hm.aspx#
- **The Joint Commission**
https://www.jointcommission.org/assets/1/18/R3_19_Anticoagulant_therapy_FINAL2.PDF

Sun	Mon	Tue	Wed	Thu	Fri	Sat
	1	2	3	4 Independence Day	5	6
7	8	9	10	11	12	13
14	15	16	17	18	19	20
21	22	23	24	25	26	27
28	29	30	31			Work on OPSI Best Practice Application

Immunization Safety



OPSI Recommended Resources:

- **Association for Professionals in Infection Control and Epidemiology**
<https://apic.org/Resources/Topic-specific-infection-prevention/vaccine-preventable>
- **Center for Disease Control**
<https://www.cdc.gov/vaccines/schedules/hcp/resources.html>
<https://www.cdc.gov/vaccines/schedules/>
<https://www.cdc.gov/vaccines/hcp/adults/for-practice/standards/index.html>

NATIONAL IMMUNIZATION AWARENESS MONTH

Sun	Mon	Tue	Wed	Thu	Fri	Sat
				1	2	3
*Engaging Care Givers to Embrace Hand Hygiene Strategies & Preparing for Influenza and Other Respiratory Pathogens						
4	5	6	7	8	9	10
				* OPSI Audio Conference		
11	12	13	14	15	16	17
18	19	20	21	22	23	24
25	26	27	28	29	30	31
						Work on OPSI Best Practice Application

Suicide Prevention



OPSI Recommended Resources:

- **American Foundation for Suicide**
<https://afsp.org/>
- **Center for Disease Control**
<https://www.cdc.gov/violenceprevention/suicide/index.html>
- **National Suicide Prevention Lifeline**
<https://suicidepreventionlifeline.org>
- **Substance Abuse and Mental Health Services Administration**
<https://www.samhsa.gov/find-help/suicide-prevention>
- **Suicide Prevention Resource Center**
<https://www.sprc.org>
- **Ohio Hospital Association**
<http://ohiohospitals.org/safesleep>
- **Ohio Perinatal Quality Collaborative**
<https://opqc.net/>

NATIONAL INFANT MORTALITY AWARENESS MONTH

Sun	Mon	Tue	Wed	Thu	Fri	Sat
1	2	3	4	5	6	7
	Labor Day					
8	9	10	11	12	13	14
National Suicide Prevention Week September 8 -14						
		World Suicide Prevention Day			World Sepsis Day	
15	16	17	18	19	20	21
22	23	24	25	26	27	28
Falls Prevention Awareness Day	First Day of Fall					
29	30					
Rosh Hashanah begins at sundown						Work on OPSI Best Practice Application

October 2019

Health Literacy



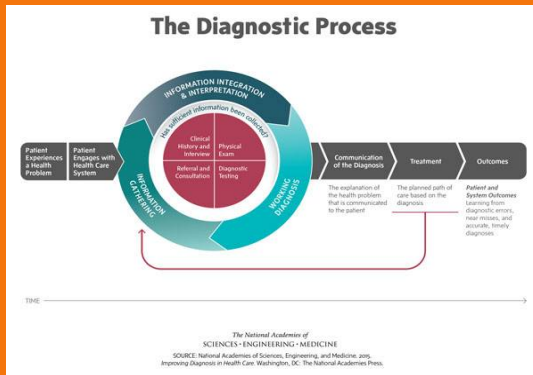
OPSI Recommended Resources

- **Health Information Translations**
<https://healthinfotranslations.org>
- **Institute for Healthcare Improvement**
<http://www.ihc.org/IHI/Topics/Improvement/ImprovementMethods/HowToImprove/>
- **National Association for Healthcare Quality**
<http://nahq.org/about/healthcare-quality-weekqualityforum.org>

NATIONAL HEALTH LITERACY & NATIONAL PHARMACY MONTH

Sun	Mon	Tue	Wed	Thu	Fri	Sat
		1 Rosh Hashanah ends at nightfall	2	3	4	5
6	7	8 Yom Kippur begins at sundown	9	10	11	12
13	14	15	16	17	18	19
Infection Prevention Week October 13-19						
	Columbus Day					Sweetest Day
20	21	22	23	24	25	26
National Healthcare Quality Week October 20-26						
27	28	29	30	31 Halloween		Work on OPSI Best Practice Application

Diagnostic Error Prevention



OPSI Recommended Resources:

- **Agency for Healthcare Research and Quality**
<https://www.ahrq.gov/professionals/quality-patient-safety/diagnostic-safety/index.html>
- **Society to Improve Diagnosis in Medicine**
<https://www.improvediagnosis.org/>
- **The National Academies of Sciences**
<http://www.nationalacademies.org/hmd/Reports/2015/Improving-Diagnosis-in-Healthcare.aspx>
- **Agency for Healthcare Research and Quality (Long Term Care)**
<https://www.ahrq.gov/professionals/systems/long-term-care/resources/pressure-ulcers/index.html>

NATIONAL HOME CARE AND HOSPICE/PALLIATIVE CARE MONTH

Sun	Mon	Tue	Wed	Thu	Fri	Sat
					1	2
3	4	5	6	7	8	9
Daylight Saving Time Ends		Election Day				
10	11	12	13	14	15	16
Diagnostic Error in Medicine International Conference November 10-13						
	Veterans Day					
17	18	19	20	21	22	23
World Prematurity Day				World Wide Pressure Injury Prevention Day		
24	25	26	27	28	29	30
				Thanksgiving		Remember: OPSI Best Practice Application Submissions Due December 20, 2019



December 2019

Influenza Vaccination

IT'S NOT
TOO LATE
TO
VACCINATE

OPSI Recommended Resources:

- **Center for Disease Control**
<https://www.cdc.gov/flu/index.htm>
- **World Health Organization Five Moments**
http://www.who.int/gpsc/tools/Five_moments/en
- <https://www.who.int/influenza/en/>

Sun	Mon	Tue	Wed	Thu	Fri	Sat
1	2	3	4	5	6	7
<i>National Hand Washing Awareness Week December 1-7</i>						
<i>National Influenza Vaccination Week December 1-7</i>						
8	9	10	11	12	13	14
15	16	17	18	19	20	21
						First Day of Winter
22	23	24	25	26	27	28
	Hanukkah begins at sundown	Christmas Eve	Christmas Day	Kwanzaa begins	Deadline OPSI Best Practice Application Submissions	
29	30	31				
		New Year's Eve				



January 2020

Surgical Safety

Surgical/Procedural Verification Protocol

- √ Pre-Operative Verification
- √ Mark the Site
- √ Time Out

OPSI Recommended Resources:

- **American College of Surgeons**
<https://www.facs.org/about-acs/statements/113-patient-safety>

<https://www.facs.org/about-acs/statements/93-surgery-checklists>
- **The Joint Commission**
https://www.jointcommission.org/standards_information/up.aspx
- **World Health Organization**
https://www.who.int/patientsafety/safesurgery/ss_checklist/en/

Sun	Mon	Tue	Wed	Thu	Fri	Sat
			1 New Year's Day	2	3	4
5	6	7	8	9	10	11
12	13	14	15	16	17	18
19	20 Martin Luther King Jr. Day	21	22	23	24	25 Chinese New Year
26	27	28	29	30	31	

Opioid Safety



OPSI Recommended Resources:

- Agency for Healthcare Research and Quality**
<https://www.ahrq.gov/opioids/whats-new.html>
- Ohio Department of Health**
<https://takechargeohio.ohio.gov/Toolkits/Healthcare-Professionals>
- Ohio State Medical Board**
<https://med.ohio.gov/Publications/Recent-News/articleid/132>
- The Joint Commission**
[https://www.jointcommissionjournal.com/article/S1553-7250\(18\)30529-4/fulltext](https://www.jointcommissionjournal.com/article/S1553-7250(18)30529-4/fulltext)

AMERICAN HEART MONTH

Sun	Mon	Tue	Wed	Thu	Fri	Sat
						1
2	3	4	5	6	7	8
9	10	11	12	13	14	15
			Lincoln's Birthday		Valentine's Day	
16	17	18	19	21	21	22
	President's Day					Washington's Birthday
23	24	25	26	27	28	29