



CAUTI Reduction

2016 A Clinton Memorial Presentation



Clinton Memorial Statistics

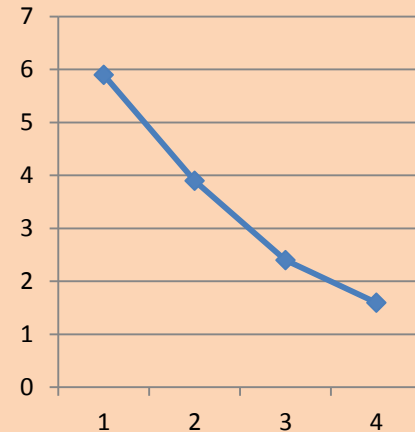


- Rurally situated in a primarily agricultural community with a population of 42,000
- The hospital is licensed for 165 beds and has an average daily census of 24.35 for 2015
- Major diagnosis' are Renal Failure, CHF, and COPD
- Physician services are provided by a hospitalist program adjunct with specialty consults

CMH CAUTI Statistics

- History of CAUTI Rates:

- ❑ 2012 mean 5.9%
- ❑ 2013 mean 3.9%
- ❑ 2014 mean 2.4%
- ❑ 2015 mean 1.6%



CMH CAUTI Statistics

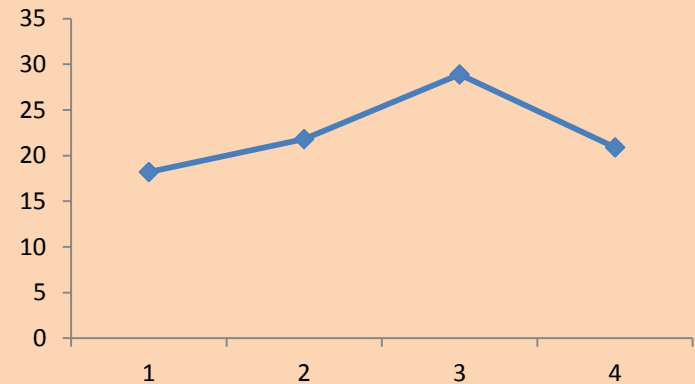
- History of Indwelling Urinary Device Rate:

- ☐ 2012 mean 18.2%

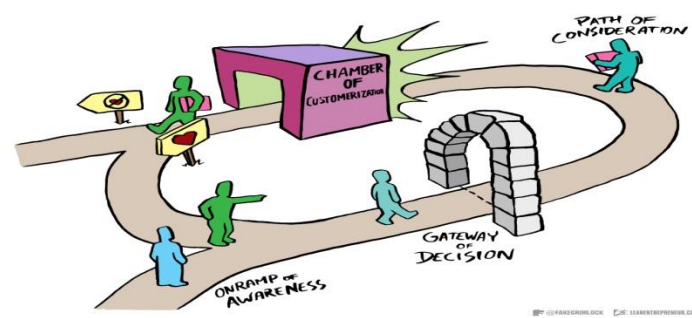
- ☐ 2013 mean 21.8%

- ☐ 2014 mean 28.9%

- ☐ 2015 mean 20.9%



The Journey



- Our journey began in 2011 with the CMS requirement of data entry into NHSN.
- That same year our hospital conferred rights for the Ohio KePRO Program to monitor our data and provide guidance for improvement.
- In 2011, our hospital joined one of many Health Engagement Networks (HEN). Ours was the JCR HEN.

The Journey Continues

IP AUDIT

- After the Preventing CAUTIs presentation, Infection Control developed a daily sequel report to determine every patient who had an indwelling urinary catheter
- Rounds were conducted on each patient to determine need for catheter and audit **leg attachment, freedom from kinks and dependent loops, and drainage bags below the bladder but off the floor**



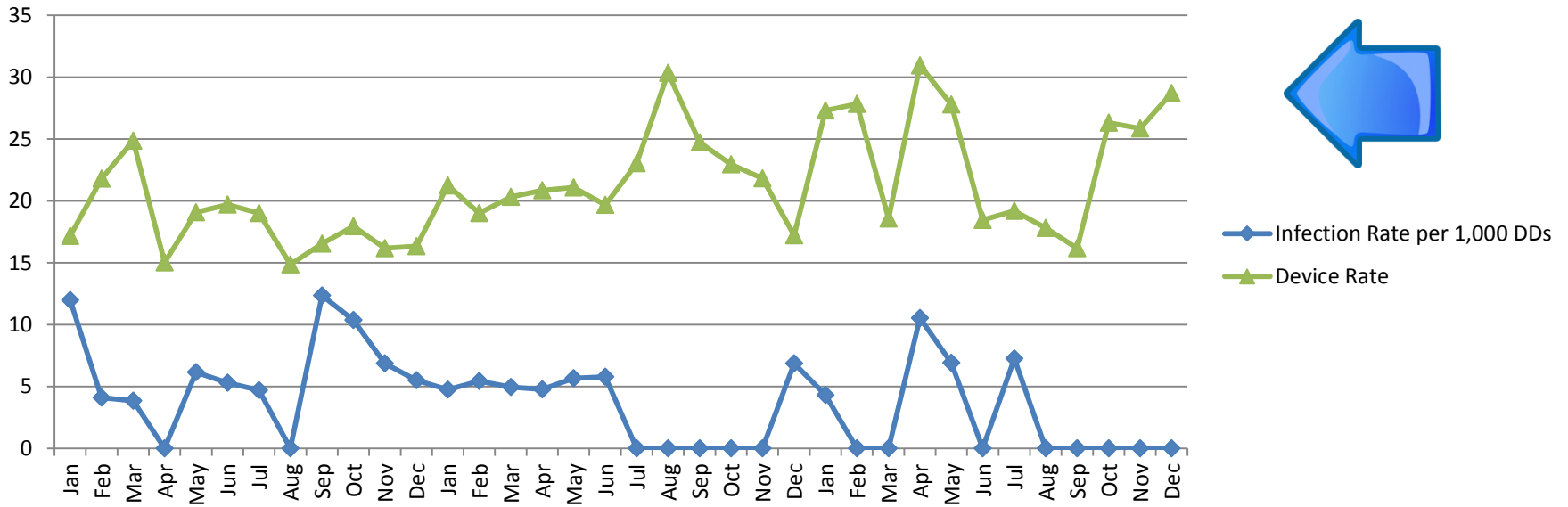
The Journey Continues

- In early 2012 there was a good response for decreasing CAUTIs and device utilization
- Later in 2012, we experienced some nursing turnover and the momentum waned for early removal and limited insertion; the CAUTIs began to decrease but the device utilization began to increase
- ICU had the best response; the nurses expected rounds and had their Foley status reports ready; chocolate helped too



FOCUS

CAUTI Infection and Device Rate from 2012 through 2014



The Journey Continues



- In 2013, our goal began to focus on device utilization reduction; our reasoning: no catheter, no CAUTI
- We began to work on a Nurse Driven Protocol for Insertion and Removal
- This involved collaboration with our bedside nurses, leadership, infection prevention, and our physicians



The Journey Continues



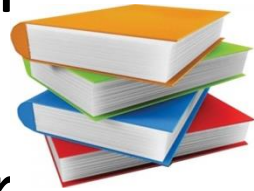
- In October of 2013 the Medical Staff approved the protocol with the stipulation of a trial period and all the physicians wanted to be called before removal
- Barriers to roll out:
 - Education was less than smooth
 - Nurses were timid with this new power
 - Convenience of the catheter was not easily given up



The Journey Continues

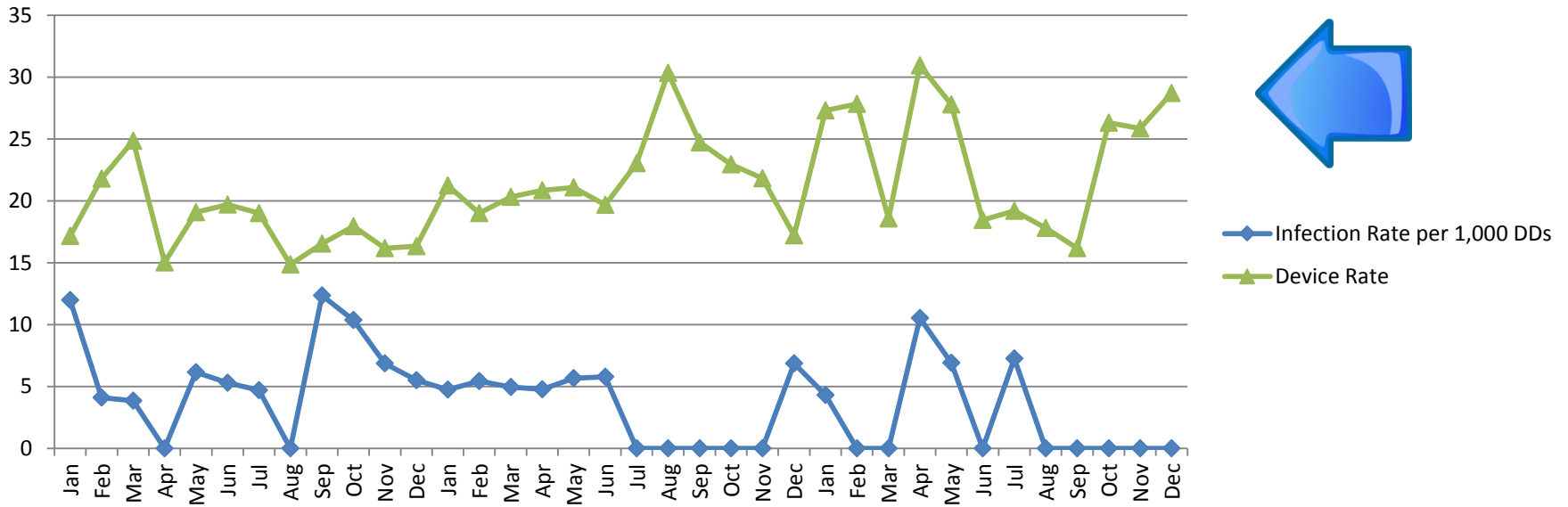


- Finally, in October 2014 the Medical Staff approved the protocol and the nurses did not have to call before removal of the catheter
- Education once again went out; this time there was a lot of face to face coaching for utilizing the protocol
- The CAUTI rate continued to decrease; however, the device utilization rate continued to increase



FOCUS

CAUTI Infection and Device Rate from 2012 through 2014



The Journey Continues



- In 2015, we decided to use leading and lagging indicators for urinary catheter device utilization
- The device rates were reported weekly as well as monthly with stronger emphasis placed on early catheter removal and using the protocol
- We also set a lofty goal of 14% device rate



The Journey Continues



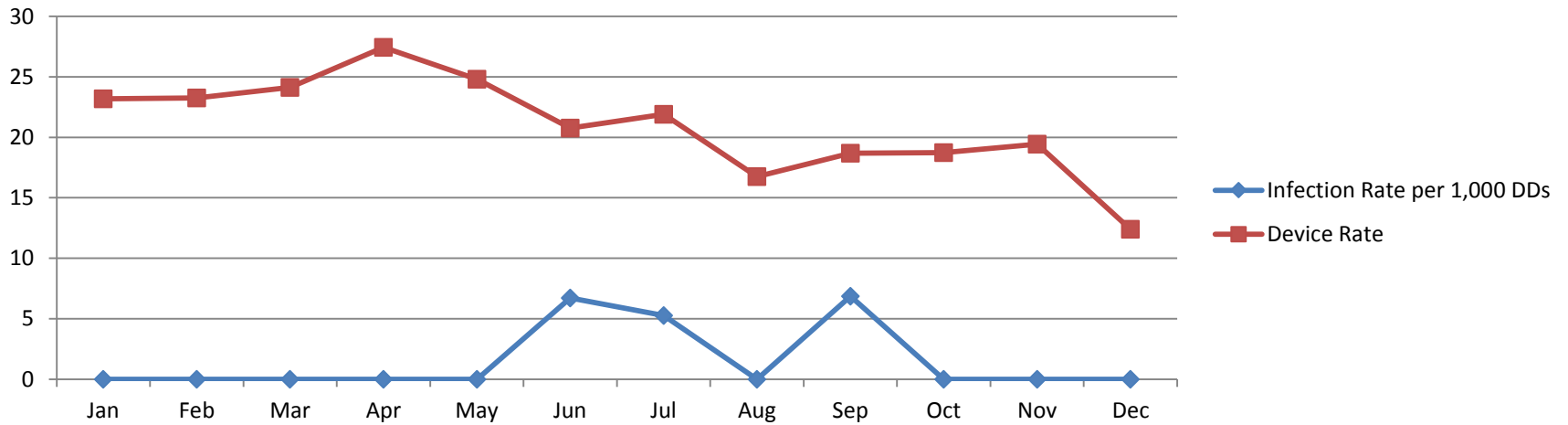
- In April 2015 we also were able to initiate Interdisciplinary Rounding
- The ICP would question the appropriateness of every urinary catheter
- Within 2 months the nurses were reporting removal of catheters before they could be questioned
- Soon the physicians were questioning the need for the catheters



Heading Toward the Goal



CAUTI Rate and Urinary Catheter Device Rate 2015



The Journey is Not Over

- In January 2016, we were again at 12.7% device utilization rate
- Our goal is to maintain/decrease this rate
- Interdisciplinary Rounding continues to support only appropriate urinary catheter utilization
- **No Urinary Catheter = No CAUTI**



Questions?

